

 **GOLF** *KOREA*

LIV STAFF

PRESENTED BY **MGON**



AGENDA



- Local Info
- Travel
- Hotels
- Ground Transportation
- Entrance & Parking
- Site Map
- Schedule of the Week
- Accreditation
- H&S & Emergency Procedures

LOCAL INFO



ANNYEONGHASEYO! WELCOME TO BUSAN!

AVERAGE TEMPS / GENERAL WEATHER INFO:

72–75°F / 22–24°C Day Time / 58–64°F / 14–18°C Night Time

SUGGESTED PACKING LIST:

Please be advised that Busan in late May is generally mild to warm, with cooler mornings and evenings, so we would recommend packing light layers such as Polo shirts, Rain jacket Cap Reusable water bottle.

SUNRISE / SUNSET:

5:14am – 7:48pm

CURRENCY:

1 USD ≈ 1,500 KRW 1 GBP ≈ 2,000 KRW



TRAVEL

YOUR JOURNEY TO KOREA

K- ETA / VISA

- Entry requirements for South Korea vary depending on your passport nationality.
- Click [here](#) to apply for K-ETA / Check if you need a visa or K-ETA

E-ARRIVAL CARD

- Click [here](#) to apply for the E-arrival Card and [here](#) for a Step by Step application guide.

GIMHAE INTERNATIONAL

AIRPORT

Click [here](#) to watch a short video on the entry process and requirements for Gimhae International Airport.



GETTING AROUND

- LIV Staff should utilise ride-hailing services (e.g. Kakao T or Uber) for all airport ground transportation and getting around Busan.
- You can download Kakao T by scanning the QR code below:



Apple Store



Google Play

HOTELS

YOUR HOME AWAY FROM THE WEEK



PARADISE HOTEL

Player, Caddie, LIV Staff



- Check In & Check Out time

3:00PM

11:00A
M

- Located 21km / 35 mins car journey to Asiad Country Club
- Located 27km / 50 mins car journey to Gimhae International Airport

GRAND JOSUN

LIV Staff, Suppliers



- Check In & Check Out time

3:00PM

12:00P
M

- Located 21km / 35 mins car journey to Asiad Country Club
- Located 28km / 50 mins car journey to Gimhae International Airport

WESTIN JOSUN

Caddie & LIV Golf Staff Hotel



- Check In & Check Out time

3:00PM

11:00A
M

- Located 24km / 36 mins car journey to Asiad Country Club
- Located 28km / 50 mins car journey to Gimhae International Airport

TOYOKO INN

LIV Staff, Vendor & Travelling Volunteer



- Check In & Check Out time

3:00PM

12:00P
M

- Located 24km / 36 mins car journey to Asiad Country Club
- Located 29km / 50 mins car journey to Gimhae International Airport

GROUND TRANSPORTATION

TO ASIAD CC & BACK



PARADISE HOTEL

- **Courtesy cars & Shuttle Bus**
- Please click [here](#) to view Courtesy Cars schedule
- Shuttle Route: Grand Josun -> Paradise Hotel ->Asiad CC
- Interval: Every 30 minutes
- Please click [here](#) to view the Shuttle Bus schedule

GRAND JOSUN

- **Shuttle Bus**
- Route: Grand Josun -> Paradise -> Asiad CC
- Interval: Every 30 minutes
- Please click [here](#) to view the Shuttle Bus schedule

WESTIN JOSUN

- **Shuttle Bus (Westin -> L7 -> Asiad CC)**
- Route: Westin Josun -> L7 -> Asiad CC
- Interval: Every 30 minutes
- Please click [here](#) to view the Shuttle Bus schedule

TOYOKO INN

- **Shuttle Bus**
- 28 - 31 May (Thu – Sun), 7:00am – 7:00pm
- Interval: Every 60 mins

OFFICIALS RIDE & SHARE

KNOW YOUR WAY IN



- Address: Asiad CC, 26, Chayang-gil, Ilgwang-eup, Gijang-gun
- Drop off point: In front of the Media Center (Official Ride & Share signage will be installed at the Ride & Share pick-up point)
- Please note that this is for LIV Official staff only.
- Upon arrival, please show your credentials to security.
- When leaving the venue, please inform IMG of your taxi's car number so security at the gate can be notified.
- Alternatively, please inform your taxi driver that they are picking up a LIV Official (LIV 관계자 / LIV Kwang Kay Jar).



ENTRANCES + PARKING

KNOW YOUR WAY IN



ENTRANCES

CLUBHOUSE

ENTRANCEldies, Player Guests, Team Staff, Pro-Am Guests, ACC Staff, Tournament Staff

MAIN ENTRANCE

- G+, General Admission, Vendors, Volunteers, Broadcast, ADA, Media, Club 54, Suites on 18, LIV Golf Lounge, KGC Lounge, Birdie Shack, Birdie Shack Skybox

CAR PARK

GENERAL PARKING

- GA, Ground Plus
- Accessible Parking

HOSPITALITY

PARKINGack, Birdie Shack Skybox, Club 54, Korean Golf Club Suite and LIV Golf Lounge

MEDIA PARKING

- Media

CLUBHOUSE PARKING

- Players (6 spots)
- Sponsors
- LIV VIPs
- KGC VIPs

SITE MAINTERNAL MAP



MAP KEY

- ACCESSIBLE HUB
- ACCESSIBLE VIEWING AREA
- BABY CHANGING
- CROSSING POINT
- FAN GRANDSTAND
- FAN SERVICES
- FAN SHUTTLES DROP-OFF/PICK-UP
- FAN VIEWING DECK
- FIRST AID
- FOOD & BEVERAGES
- GROUNDS PLUS ACCESS
- KOREAN GOLF CLUB HOSPITALITY
- LOST AND FOUND
- NURSING ROOM
- OFFICIAL MERCHANDISE
- PLAYER AND CADDIE TOILETS
- PODIUM
- RESTROOMS
- SENSORY ZONE
- SHOTGUN START LAUNCHPAD
- SUNSCREEN STATION
- VIDEO SCREEN
- WATER STATION

SCORECARD

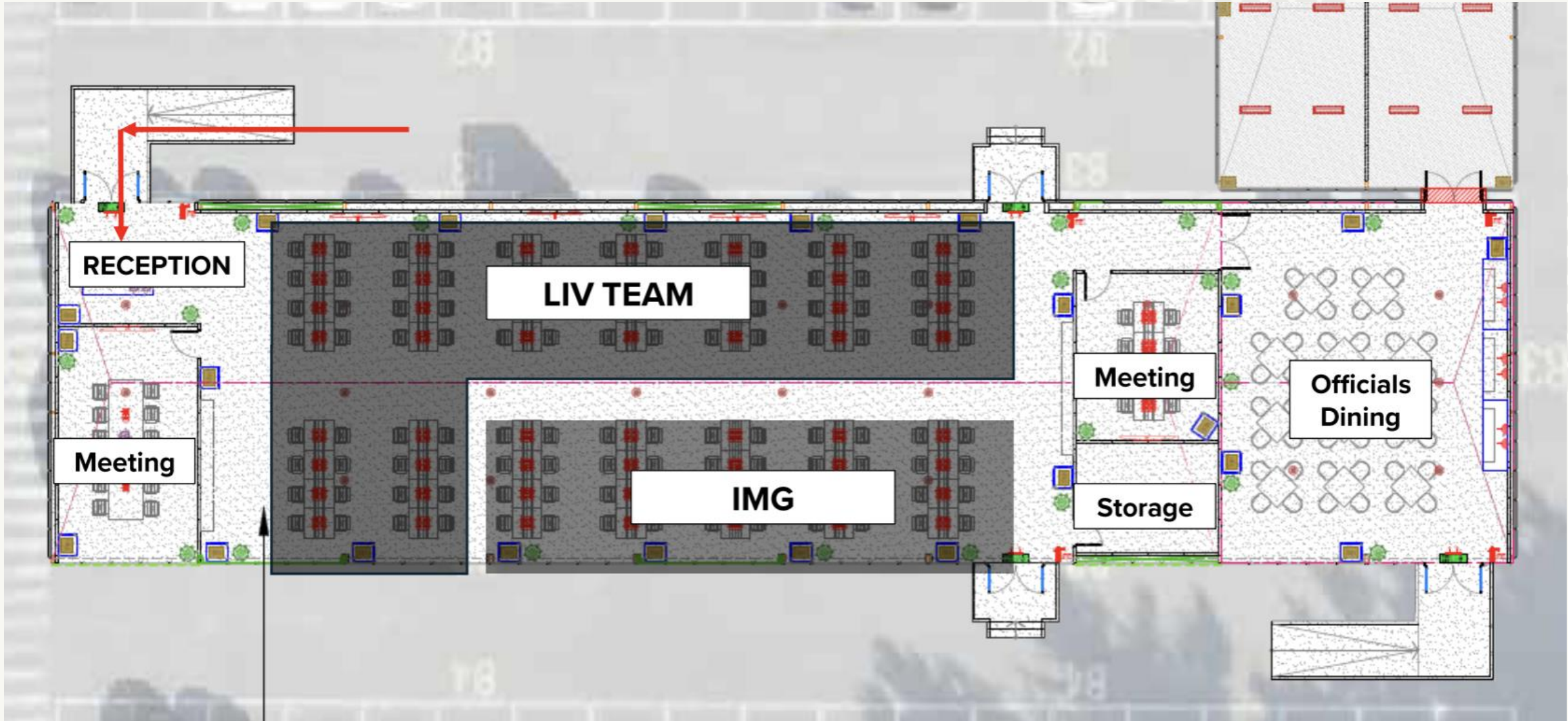
ASIAD COUNTRY CLUB

HOLE	1	2	3	4	5	6	7	8	9	OUT
PAR	4	4	3	5	4	3	4	4	4	35
YARDS	412	372	154	575	447	159	418	428	501	3466
METERS	377	340	141	526	409	145	382	391	458	3169

HOLE	10	11	12	13	14	15	16	17	18	IN	TOTAL
PAR	4	4	4	3	4	5	3	4	4	35	7024
YARDS	417	486	437	192	417	601	170	384	454	3558	7024
METERS	381	444	400	176	381	550	155	351	415	3253	6422



SITE MAP TOURNAMENT OFFICE



SCHEDULE OF THE **V** YOUR WEEK AT A GLANCE



MONDAY (PRACTICE DAY)	TUESDAY (PRACTICE DAY)	WEDNESDAY (PRO-AM DAY)	THURSDAY (TOURNAMENT R1)	FRIDAY (TOURNAMENT R2)	SATURDAY (TOURNAMENT R3)	SUNDAY (TOURNAMENT R4)
Tournament Office 7:30am — 7:30pm	Tournament Office 7:30am — 7:30pm	Tournament Office 6:00am — 6:30pm	Tournament Office 8:30am — 7:30pm	Tournament Office 8:30am — 7:30pm	Tournament Office 8:30am — 9:30pm	Tournament Office 8:30am — 7:30pm
Players Dining 8:00am — 7:00pm	Players Dining 8:00am — 7:00pm	Staff Dining 6:00am — 10:00am 11:30am — 2:30pm	Staff Dining 8:30am — 10:00am 11:30am — 3:00pm	Staff Dining 8:30am — 10:00am 11:30am — 3:00pm	Staff Dining 8:30am — 10:00am 11:30am — 3:00pm	Staff Dining 8:30am — 10:00am 11:30am — 3:00pm
Practice Facilities & APC 8:00am — 6:00pm	Practice Facilities & APC 8:00am — 6:00pm	Players Dining 6:30am — 6:30pm	Players Dining 9:00am — 7:00pm	Players Dining 9:00am — 7:00pm	Players Dining 9:00am — 7:00pm	Players Dining 9:00am — 7:00pm
Practice Round 9:00am — 6:00pm	Practice Round 9:00am — 6:00pm	Practice Facilities & APC 6:30am — 5:30pm	Practice Facilities & APC 9:00am — 7:00pm	Practice Facilities & APC 9:00am — 7:00pm	Practice Facilities & APC 9:00am — 7:00pm	Practice Facilities & APC 9:00am — 1:00pm
Officials Dining 11:30am — 2:30pm	Physio 9:00am — 5:00pm	Physio 6:30am — 2 HRS after Pro-Am	LIV x IMG Daily Meeting 9:30am — 10:00am	LIV x IMG Daily Meeting 9:30am — 10:00am	LIV x IMG Daily Meeting 9:30am — 10:00am	LIV x IMG Daily Meeting 9:30am — 10:00am
Physio 2:00pm — 5:00pm	LIV x IMG Daily Meeting 9:30am — 10:00am	Pro-Am Registration 7:00am — 10:30am	Physio 10:15am — 2 hrs after Round	Physio 10:15am — 2 hrs after Round	Physio 10:15am — 2 Hrs after Round	Physio 10:15am — 2 Hrs after Round
Last Tee Time 4:00pm	Officials Dining 11:30am — 2:30pm	Pro-Am Tee Times 8:30am — 10:50am	Gates, Fan Village , Hospitality 11:00am — 30 mins after play	Gates, Fan Village , Hospitality 11:00am — 30 mins after play	Gates, Fan Village 11:00am — End of Concert	Gates, Fan Village 11:00am — 1 HR after play
	Last Tee Time 4:00pm	LIV x IMG Daily Meeting 9:30am — 10:00am	Shotgun Start 1:15pm	Shotgun Start 1:15pm	Hospitality 11:00am — 30 mins after play	Hospitality 11:00am — 30 mins after play
		Impact Unleashed 3:15pm — 4:45pm			Shotgun Start 1:15pm	Shotgun Start 1:05pm
		Green Room 6:30pm - 8:30pm			Afterplay Concert 6:00pm	Podium Ceremony After Golf

AFTER PLAY

PEGGY GOU



LIV GOLF AFTER PLAY

PEGGY GOU

LIV GOLF KOREA
28-31 MAY 2026

SAT 30 MAY **6PM** **BUY TICKETS** **LIVGOLF.COM 71**

The promotional poster features a central photograph of Peggy Gou wearing dark sunglasses and a black top, with visible tattoos on her arms and chest. The background is white with blue arrow patterns pointing in various directions. At the top, a black banner contains the "LIV GOLF AFTER PLAY" logo. Below the photo, the name "PEGGY GOU" is written in large, bold, black letters. To the right of the photo is a circular logo for "LIV GOLF KOREA" with the dates "28-31 MAY 2026" and a white flower icon. At the bottom, there are four buttons: "SAT 30 MAY" (red), a globe icon with "6PM" (blue), "BUY TICKETS" (black), and "LIVGOLF.COM 71" (black).

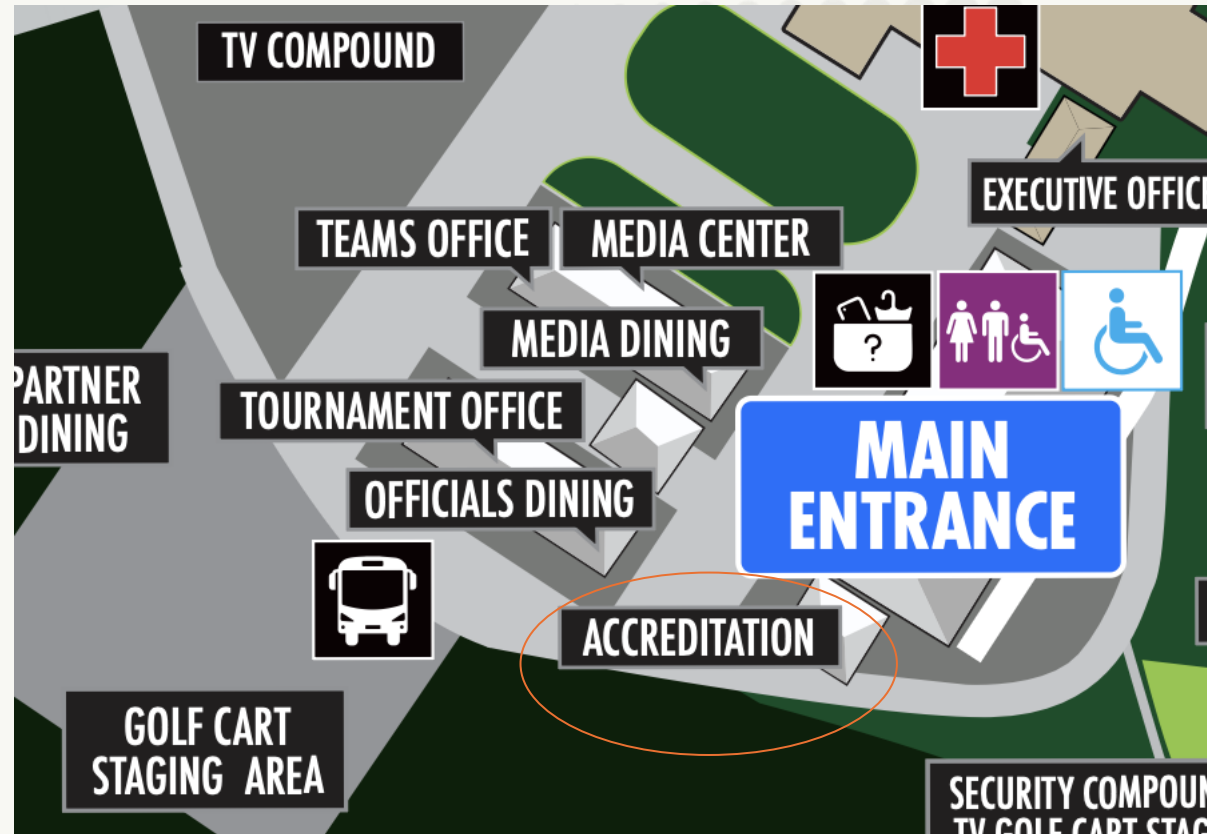
ACCREDITATION

YOUR PASS TO BE ON-SITE



LOCATION:

- The accreditation office is located next to the Main Entrance
- LIV Golf staff should have already received their invitation to register for their season long credential



H&S AND EMERGENCY

SAFETY FIRST, ALWAYS. PROCEDURES

ALL Accidents/Incidents(including ball strikes) must be notified to EOC immediately.

EOC will then notify the necessary parties/authorities and co-ordinate the response appropriately.

EOC IS CONTACTABLE

BY: radio Channel

- Telephone: **+65 8454 9829**
- WhatsApp (for non-emergencies)



Please use the link below to familiarise yourself with the health and safety protocol on reporting any emergencies:
EOC Staff Briefing Sheet Link



GOLF OPS

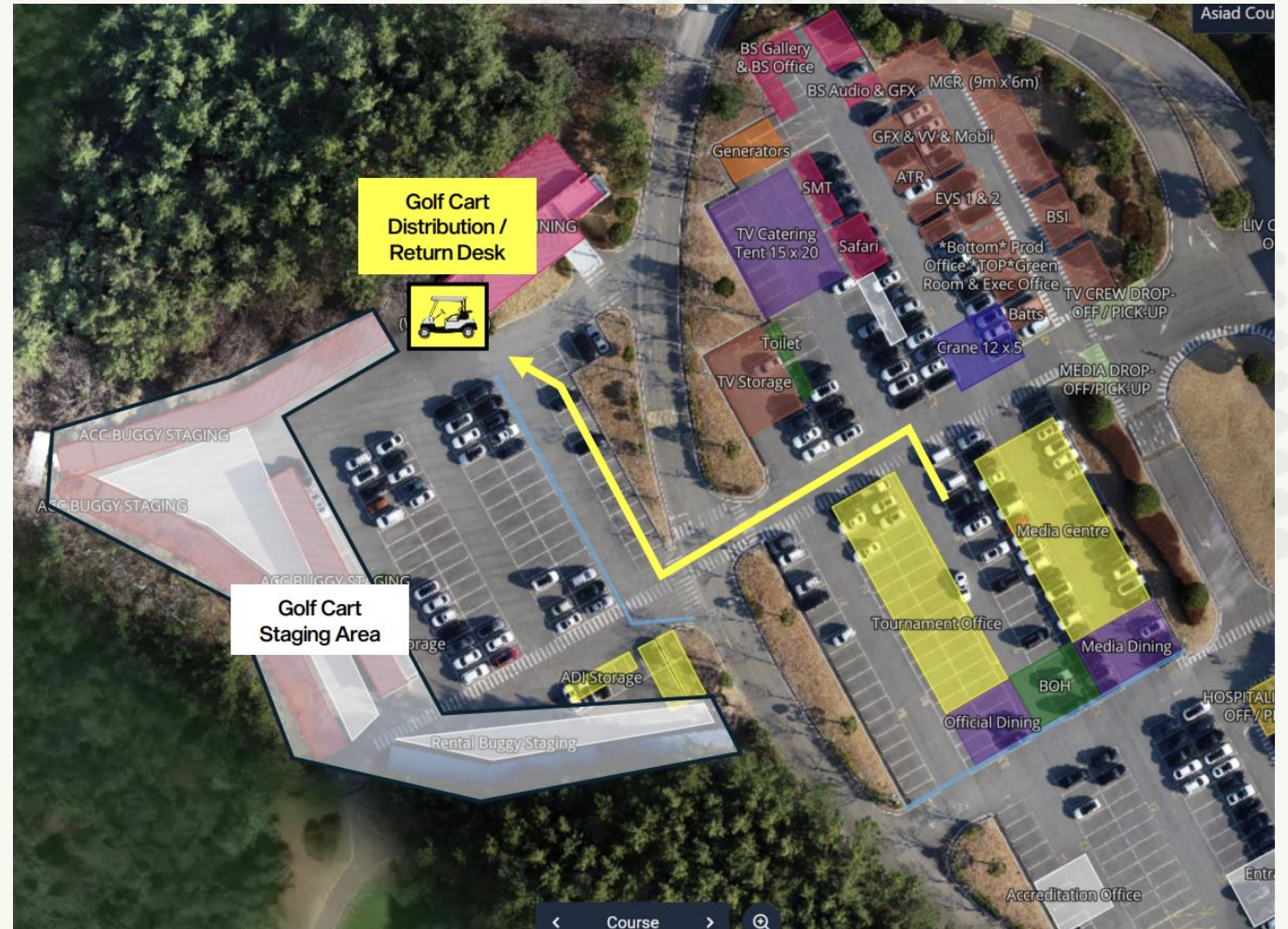
KEEPING PLAY RUNNING SMOOTHLY



GOLF CART COLLECTION

be collected from the designated Distribution Desk (highlighted YELLOW).

- Golf cart cards should first be collected from Dohyeong Kim (IMG) at the Tournament Office.
- Users must present their golf cart card at the Desk before collection.
- Users are also required to fill in the Golf Cart Distribution Sheet before receiving the cart.



GOLF OPS

KEEPING PLAY RUNNING SMOOTHLY

GOLF CART RETURN & PARKING

- Golf carts must be returned to the same Distribution / Return Desk after use.
- Golf cart parking at the Clubhouse parking area is not allowed.
- After use, all golf carts must be parked at the designated Golf Cart Staging Area only.
- Users should proceed on foot from the staging area to the Clubhouse or nearby facilities.



LOCAL TIPS

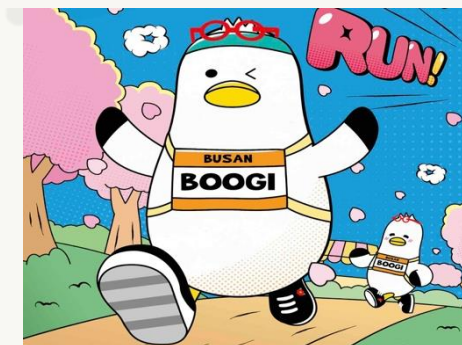
WIP LINE

SIMPLE KOREAN FOR GETTING AROUND BUSAN'S MUST-EAT

- Hello- Annyeong haseyo
- Please take me to [place]
[Place] eh ga joo se yo
e.g. Paradise Hotel, eh ga joo se yo
- You can drop me off here
Yo gi eh so nae ryo joo se yo
- How much is it?
Eol ma ye yo?
- Thank you! - Gam sa ham ni da
- Dwaeji Gukbap: A hearty, traditional Busan pork bone broth soup best enjoyed at Seomyeon Food Alley or Haeundae Traditional Market.
- Ssiat Hotteok: A sweet, pan-fried Korean pancake stuffed with brown sugar, cinnamon, and a generous mix of seeds.
- Fresh Seafood



BUSAN'S MASCOT - BOOGI



PLAYLIST RECS

- [Korean Lofi Beats](#) - Chill underground lofi / hip hop / r&b
- [Kpop On!](#) - The new and hottest Kpop
- [K Hip Hop & Rap](#)
- [Korean Trot Music](#)